

Cat.6 4 Pair UTP Patch Cords



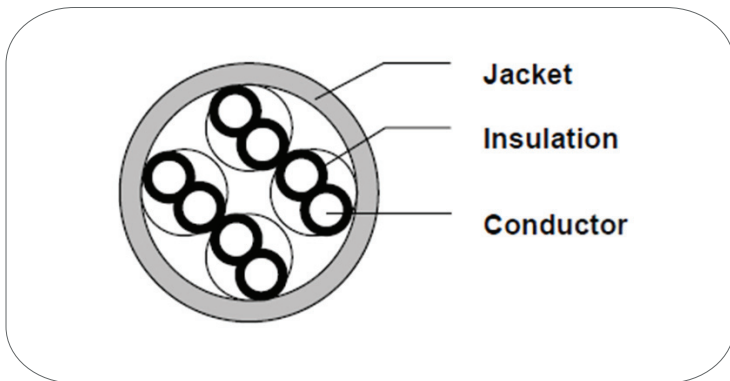
Applications

- Patch panel to patch panel connections
- PC to information outlet connections
- Information outlet to telecommunications closet connections
- Equipment & DTE connections

Standards

- UL Verified
- ISO/IEC11801 2nd edition
- ANSI/TIA Standard 568-C.2
- CENELEC EN 50173

Construction

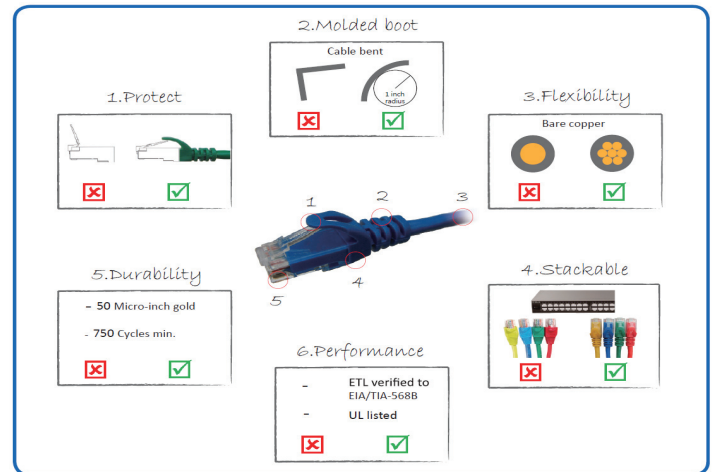


Features

- Molded boots prevent pin from bending and cables from kinking
- 24AWG stranded wire provides maximum flexibility
- Brilliant colors make management a snap
- Fully tested to meet ANSI/TIA-568-C.2 category 6 requirement
- The various colors are available to meet TIA/EIA-606 standards
- The mechanical characteristics and transmission performance meet 16Mbps token Ring, 10Base-T, 100Base-T, 155Mbps, 622Mbps ATM, Gigabit-Ethernet and 1.2Gbps ATM requirements.

Environmental Conditions

- Twisted pair color code:
 - Pair 1>blue, white/blue ring
 - Pair 2>orange, white/orange ring
 - Pair 3>green, white/green ring
 - Pair 4>brown, white/brown ring
- Conductor: 24AWG(7x0.195mm) stranded anneal copper wire
- Insulation material: HDPE
- Diameter of dielectric core: 1.0±0.05mm
- Insulation thickness: min at any point: 0.20mm
- Number of twist pairs: 4 pairs
- Assembly: 4 pair of dielectric core shall be stranded in circular form
- Material of jacket: PVC/LSZH
- Thickness of jacket: AVG 0.66~0.70mm
- Nominal O.D: 5.6±0.2mm
- Jacket color: red, orange, yellow, green, blue, grey, etc
- RJ45 plug: Housing>polycarbonate
- Contact>copper alloy 50u" gold plated over nickel
- Strength>20lbs. min
- Durability>200 cycles min.
- Insulation resistance: 500 megaohms min.
- Wiring schemes: T568B



Ordering Information

Part No.	Description	Length	Color	Std. Qty
1201-04174	Cat.6 4 pair UTP patch cord, 1M,gray	1	Gray	1
1201-04175	Cat.6 4 pair UTP patch cord, 2M,gray	2	Gray	1
1201-04176	Cat.6 4 pair UTP patch cord, 3M,gray	3	Gray	1
1201-04184	Cat.6 4 pair UTP patch cord, 5M,gray	5	Gray	1

Note Specifications are subject to change without any notice or obligation on the part of the manufacturer.